

Watford Museum

Champion Radio Champion, Trav-ler 844 (September 1956)

This is portable, battery operated radio.

In the 1950s there were three main radio station broadcasts by the BBC.

They were the Light Programme, Home Service and the Third Programme.

They broadcast a range of music and entertainment programmes.

Do you listen to the radio? What do you like to listen to?



Watford Museum

Smith Kendon Acid Lemon Tablets

You can still buy travel sweets like this today.

The company started in the 18th century.

In 1972 they were given a Queens award to Industry.

Today the sweets are still made in Bridgend, Glamorgan.

What are your favourite sweets?



Watford Museum

The Beacon Infant Readers Book Six

This reading book was published in 1964.

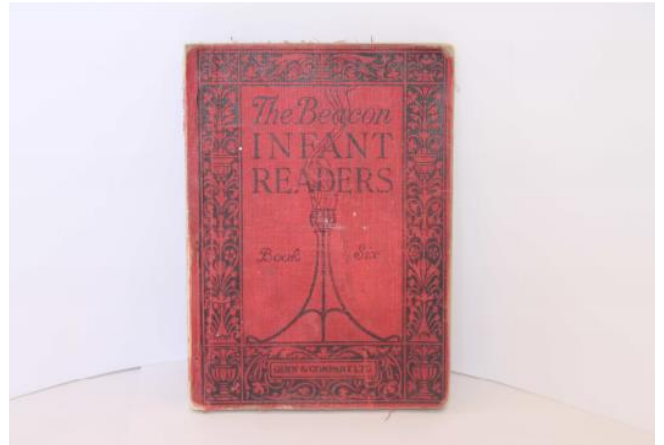
It includes the stories of William Tell, and Jack and the Beanstalk.

The series concentrated on exciting stories to help children enjoy reading.

There are phonics tables at the back of the book.

These books were to be found in schools and libraries.

How do your favourite books compare to this one?



Watford Museum

Wembley Sports Camera

This was made in England by Truvox between 1950 to 1956.

The company hoped it would make photography easier for everyone.

It has guides to help people use it.

The camera is easy to pack as it has a clever lens storage design.

Although its name is the Wembley Sport Camera it was tricky to take movement shots with this camera.

How do you take pictures today? Do you use a camera or a phone?



Watford Museum

Hanging Steamer

This spherical steel alloy object was probably used as a pudding steamer. It could also be used as a steamer for vegetables.

You would hang it above a cooking pot. The steam would then rise and cook the contents.

Steamers have been around for a long time.

This one most likely date from the turn of the 20th century.

Do we cook vegetables like this today?



Watford Museum

Daily Mail Popular Dogs Jig-saw Puzzle

This puzzle probably comes from the 1940s.

These Jigsaws were used to run competitions as well.

This one encouraged reader to complete the puzzle.

You then had to guess at which order the dogs were placed in.

Do you like to do jigsaw puzzles?

